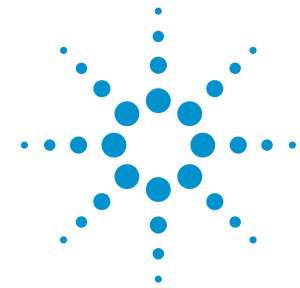


## Quick Fact Sheet

# Agilent Infiniium 9000 Series Oscilloscopes

## Engineered for broadest measurement capability



### Key specifications

Bandwidth	600 MHz, 1 GHz, 2.5 GHz and 4 GHz models
Channels	4-ch, and 4-ch + 16 digital channels models
Sample rate	10 GSa/s (20 GSa/s on 2-ch) (600 MHz is 5 GSa/s on 4 ch and 10 GSa/s on 2 ch)
Memory	20 Mpts standard (40 Mpts on 2-ch)
Display	15" high-definition display with XGA resolution
Triggering	Edge, glitch, runt, timeout, pattern/pulse range, state, pulse width line, window, setup and hold, video and serial
Warranty	Standard 1-year warranty

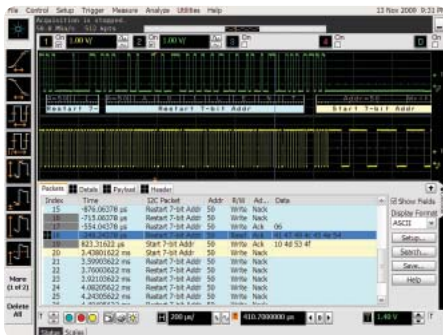
What makes the Infiniium 9000 Series the go-to scope for a complete range of test and debug challenges?

### Three instruments in one

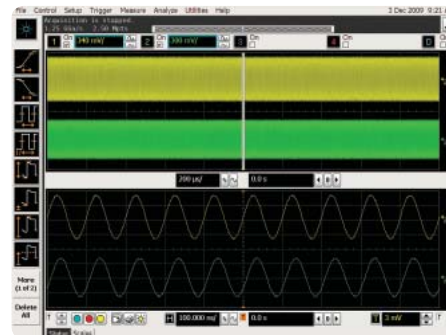
- **Oscilloscope:** Fast sample and update rates let you see a precise representation of your signal. Scope is packed with features and analysis capabilities.
- **Logic analyzer:** Fast, deep-memory digital channels show critical data values and timing relationships.
- **Protocol analyzer:** World's first scope-based protocol viewer with multi-tab viewing so you can quickly move between protocol and physical layers.

**Widest range of application-specific software** for debug, analysis and compliance testing

**Sized to fit your environment** with the largest display (15"), a smaller depth (9") and lighter weight (26 lbs) than any other scope in its class.



Extend your scope capability with protocol analysis. The tracking marker/bar shows precise time alignment between protocol viewer and analog waveforms.



Use responsive deep memory to see longer periods of time.



Integrated mixed-signal oscilloscope lets you trigger across time-correlated analog and digital channel combinations.

Anticipate — Accelerate — Achieve



Agilent Technologies

## Quick Fact Sheet

# Order the mixed-signal oscilloscope (MSO) to add 16 digital timing channels to any scope

## Oscilloscope models

Model	Bandwidth	Sample rate*	Memory depth*	Scope channels
DSO9064A	600 MHz	5 GSa/s	20 Mpts	4
MSO9064A	600 MHz	5 GSa/s	20 Mpts	4 + 16 digital
DSO9104A	1 GHz	10 GSa/s	20 Mpts	4
MSO9104A	1 GHz	10 GSa/s	20 Mpts	4 + 16 digital
DSO9254A	2.5 GHz	10 GSa/s	20 Mpts	4
MSO9254A	2.5 GHz	10 GSa/s	20 Mpts	4 + 16 digital
DSO9404A	4 GHz	10 GSa/s	20 Mpts	4
MSO9404A	4 GHz	10 GSa/s	20 Mpts	4 + 16 digital

\* In 2 ch mode, sample rate and memory depth double.

## Options and accessories

Model	Description
N2900A-050	Upgrade to 50 Mpts of memory
N2900A-100	Upgrade to 100 Mpts of memory
N2900A-200	Upgrade to 200 Mpts of memory
N2900A-500	Upgrade to 500 Mpts of memory
N2901D	DSO9064A to MSO9064A upgrade kit
N2901A	DSO9104A to MSO9104A upgrade kit
N2901B	DSO9254A to MSO9254A upgrade kit
N2901C	DSO9404A to MSO9404A upgrade kit
N5473A	External DVD-RW with USB connection
N2902A	9000 Series oscilloscope rackmount kit
N2745A	Additional removable hard disk drive (requires option 801 at time of purchase)
N4865A	GPIB to LAN adapter
N2918B	Infiniium Evaluation Kit

For a complete listing of available Agilent probes, see the *Agilent Probes and Accessories Selection Guide*, publication number 5989-6162EN.

### Recommended service options

Additional two years of Return-to-Agilent warranty

Additional two years of Return-to-Agilent calibrations

For more information go to [www.agilent.com/find/removealldoubt](http://www.agilent.com/find/removealldoubt)

## Recommended probes

Model	Key characteristics
N2783A	500-MHz passive probes (standard)
1130A	1.5 GHz InfiniiMax probe (optional)
1131A	3.5 GHz InfiniiMax probe (optional)
N2795/96A	1 and 2 GHz active probes (optional)

## Applications

Model	Description
N5462B	RS-232/UART triggering and decode
E2681A	EZJIT jitter analysis software
N5384A	High-speed SDA and clock recovery
N5400A	EZJIT Plus jitter analysis software
N5464B	USB triggering and decode
N5463B	PCI Express 1.1 triggering and decode
N5391B	I <sup>2</sup> C/SPI triggering and decode
N8803B	CAN/LIN/FlexRay triggering and decode
N5415B	InfiniiScan
N5430A	User-defined function (MATLAB integration)
U1882A	Power measurement application software
N5397A	Xilinx FPGA dynamic probe application
N5433A	Altera FPGA dynamic probe application
N5392A	Ethernet compliance application
N5416A	USB 2.0 compliance application
U7233A	DDR1 validation application
N5413B	DDR2 validation application
N5467A	User-definable application
N8802A	MIPI D-PHY Trigger and decode
U7238A	MIPI D-PHY compliance
N8817A	JTAG triggering and decode
N2808A	Precision probe

For more information on this and other Agilent scopes please visit [www.agilent.com/find/9000](http://www.agilent.com/find/9000)

Technical data, availability and pricing subject to change without notice.

© Agilent Technologies, Inc. 2012, Printed in USA, February 13, 2012

5990-3772EN



**Agilent Technologies**